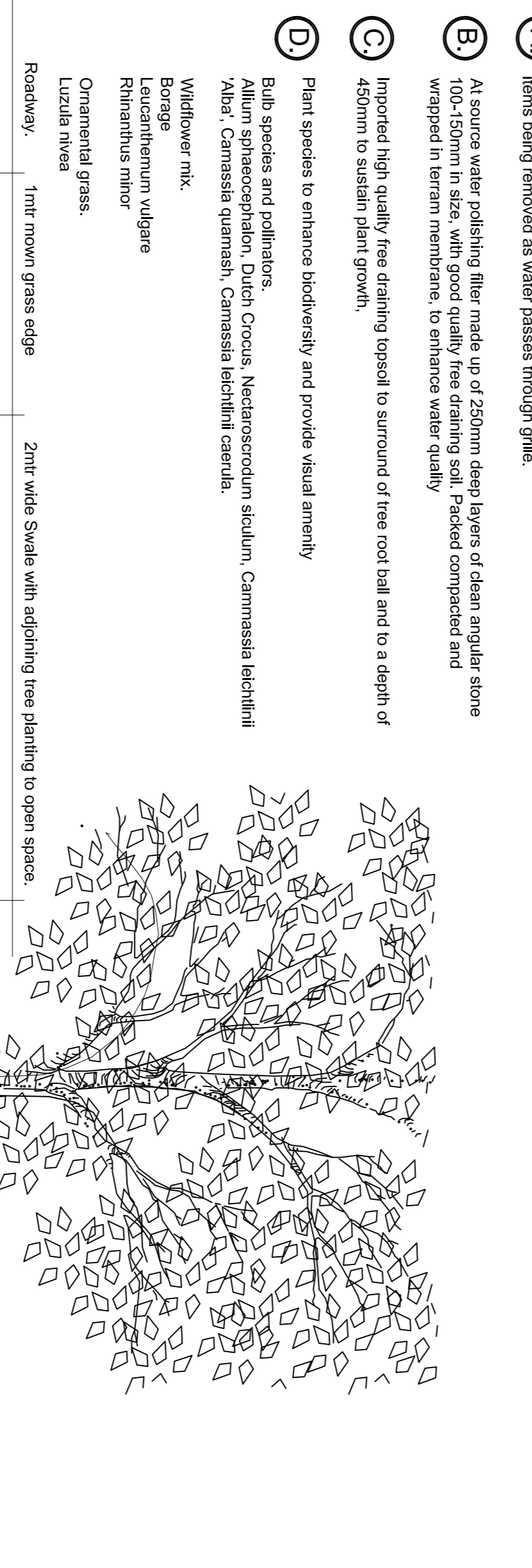


Leucanthemum vulgare



Allium sphaerocephalon



Borago



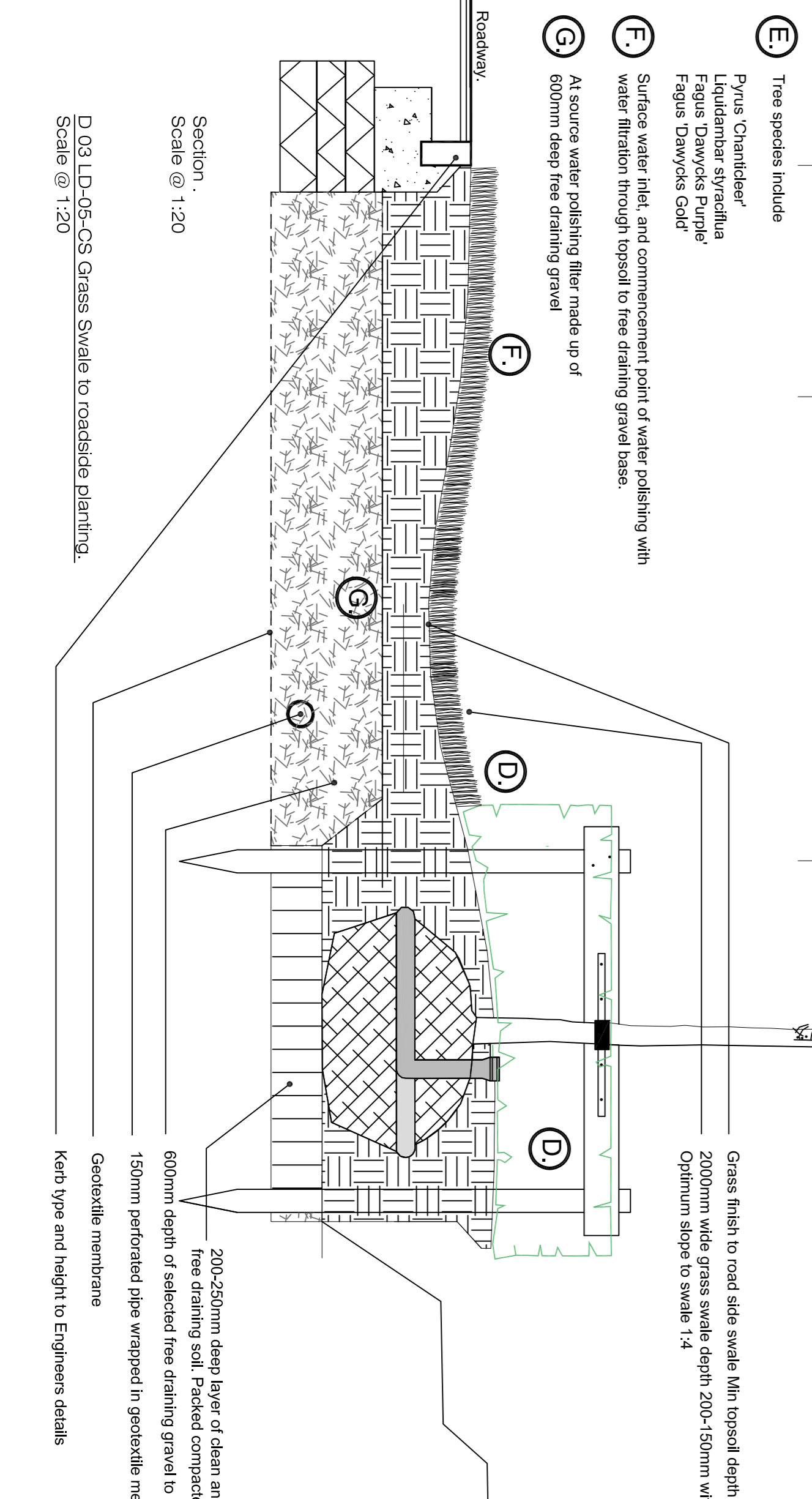
Camassia leichtlinii Alba



Camassia leichtlinii caerulea



Nectaroscordum siculum



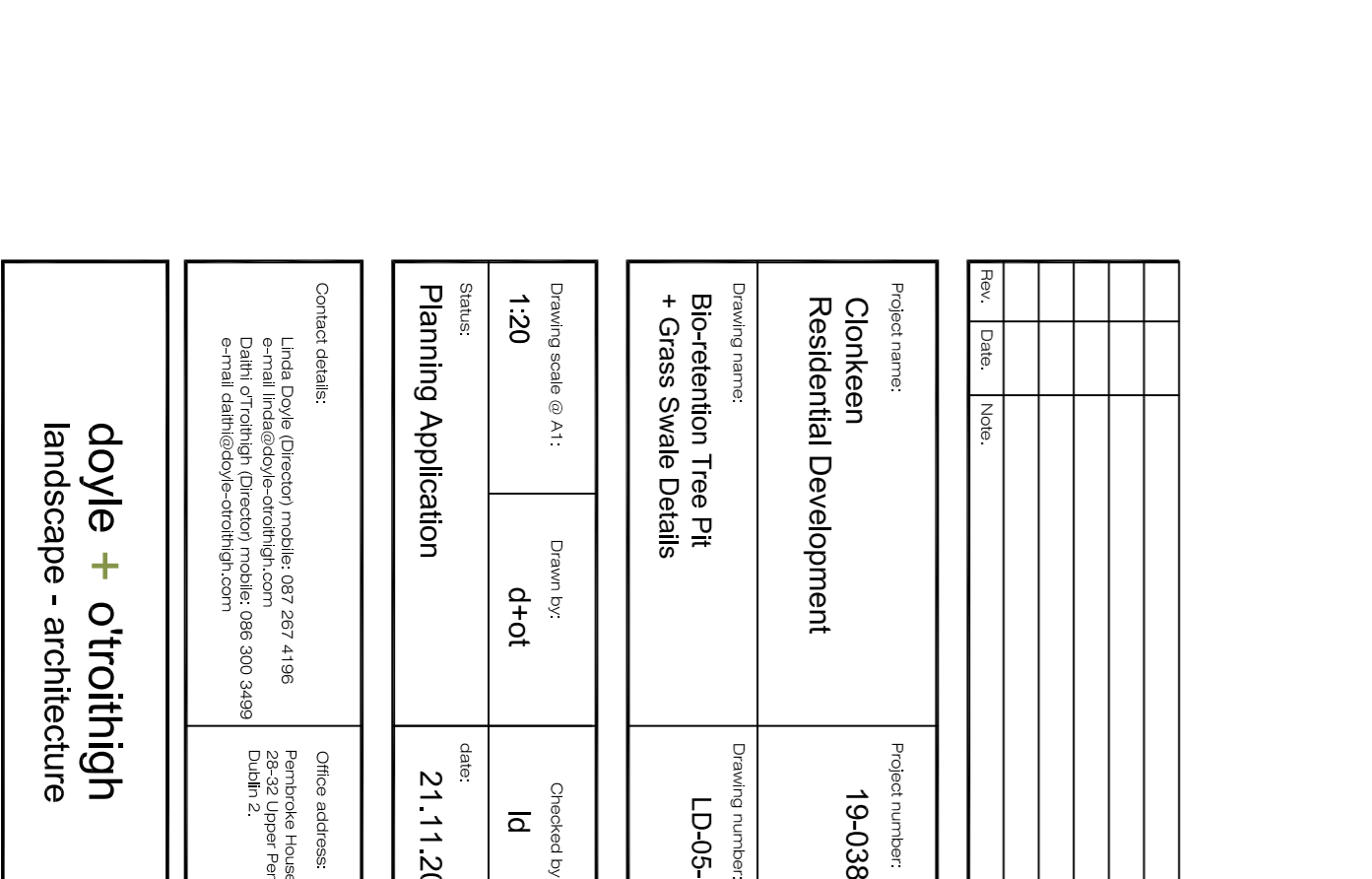
Rhinanthus minor



Luzula nivea



Camassia leichtlinii Alba



Dutch crocus

Proposed plant species to bio retention tree pits and swale.

- A** Surface water inlet and commencement point of water polishing with large items being removed as water passes through grille.
- B** At source water polishing filter made up of 250mm deep layers of clean angular stone 100-150mm in size with good quality free draining soil. Packed compacted and wrapped in terram membrane, to enhance water quality.
- C** Imported high quality free draining topsoil to surround of free root ball and to a depth of 450mm to sustain plant growth.
- D** Plant species to enhance biodiversity and provide visual amenity.
Bulb species and pollinators:
Allium sphaerocephalon, Dutch Crocus, Nectaroscordum siculum, Camassia leichtlinii Alba, Camassia quamash, Camassia leichtlinii caerulea.
Wildflower mix:
Borago
Leucanthemum vulgare
Rhinanthus minor
Ornamental grass:
Luzula nivea
- E** Tree species include:
Pyrus Chantleer,
Liquidambar styraciflua
Fagus 'Dawycs Purple'
Fagus 'Dawycs Gold'
- F** Surface water inlet, and commencement point of water polishing with water filtration through topsoil to free draining gravel base.
- G** At source water polishing filter made up of 600mm deep free draining gravel.

Grass finish to road side swale Min topsoil depth 200mm
200mm wide grass swale depth 200-150mm with free draining gravel base
Optimum slope to swale 1:4

200-250mm deep layer of clean angular stone 100-150mm in size with good quality free draining soil. Packed compacted and wrapped in terram membrane
600mm depth of selected free draining gravel to base of swale
150mm perforated pipe wrapped in geotextiles membrane

Geotextile membrane
Kerb type and height to Engineers details

Section .
Scale @ 1:20
D 03 LD-05-CS Grass Swale to roadside planting.
Scale @ 1:20

Project name:	Clontarf Residential Development	Project number:	19-038
Drawing name:	Bio-retention Tree Pit + Grass Swale Details	Drawing number:	LD-05-CP
Drawing scale:	1:20	Checked by:	Id
Scale:	1:20	Date:	21.11.2020

Contact details:
Lizali Doyle, Director, mobile: 087 287 4186
Daire O'Rourke, Director, mobile: 087 903 3493
e-mail: daire@doyleoerourke.com

